



elements | **Solids**

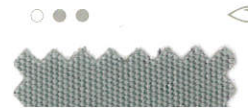
ments | Solids

UNIS / LES UNIS / LE TINTE UNITE / COLORES LISOS

IVORY



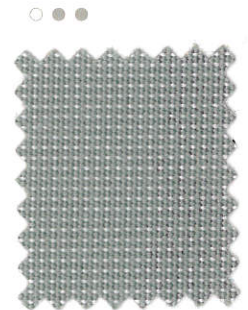
314 40



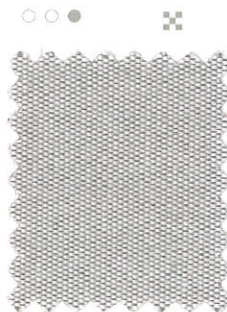
314 364



314 E67



314 364



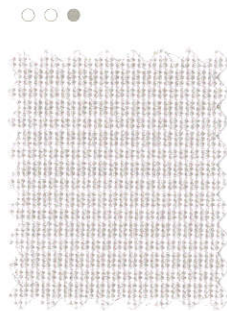
314 030



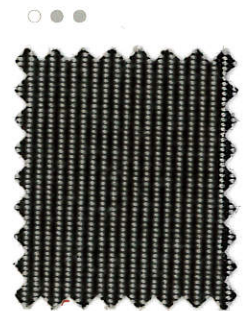
314 398



314 910



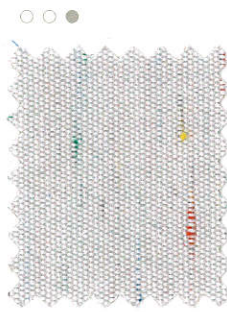
314 723



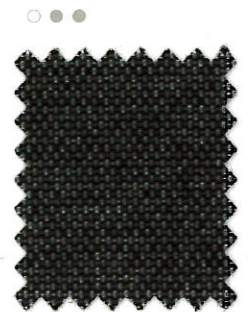
314 402



314 010



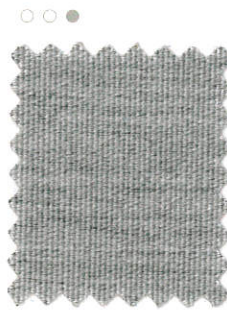
314 344



314 638



314 018



314 028



314 154



314 016

UV 80



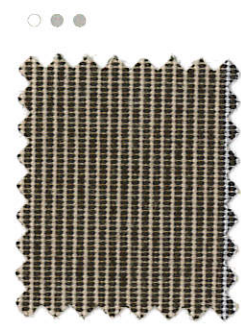
314 819

UV 80



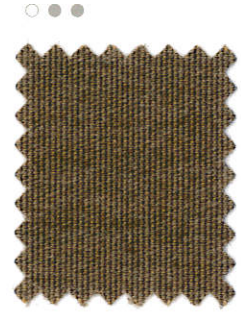
314 013

UV 80



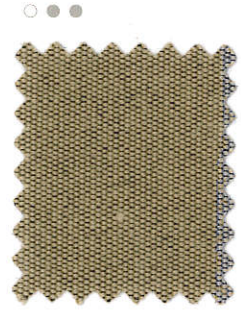
314 403

UV 80



314 917

UV 80



314 919

UV 80



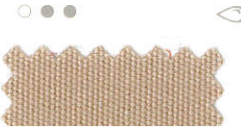
314 916

UV 80



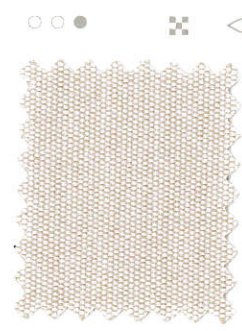
314 038

UV 80



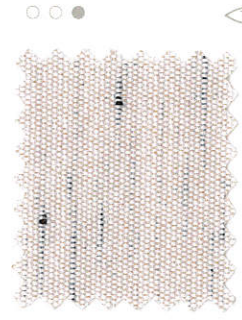
314 814

UV 80



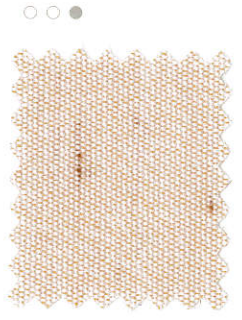
314 325

UV 60



314 471

UV 60



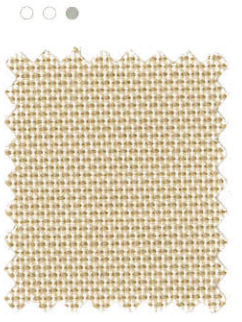
314 830

UV 60



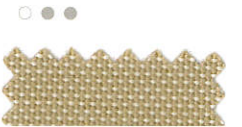
314 851

UV 80



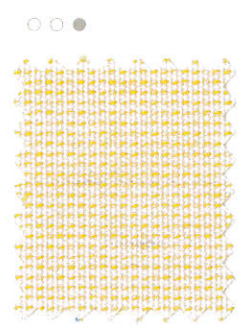
314 814

UV 80



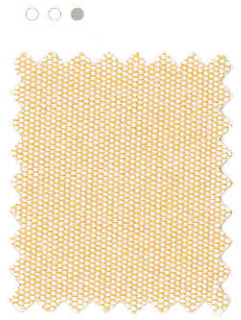
314 570

UV 80



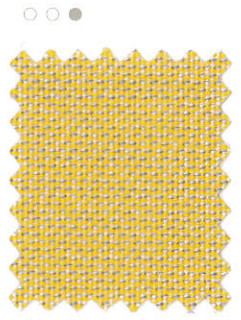
314 583

UV 60



314 947

UV 60



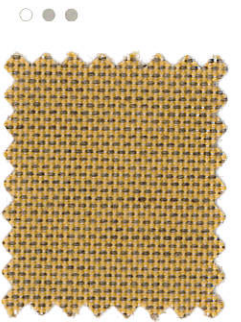
314 045

UV 80



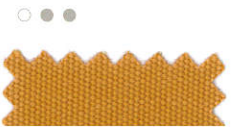
314 395

UV 80



314 570

UV 80



314 570

UV 80

UV 40

314 033



UV 80

314 002



UV 80

314 005

UV 60

314 724



UV 80

314 014



UV 80

314 007

UV 80

314 113



UV 80

314 160



UV 80

314 001

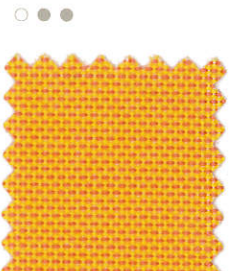


UV 80

314 397

UV 80

314 610



UV 80

314 610



UV 80

314 347

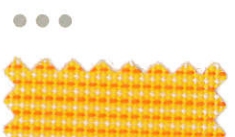


UV 80

314 143

UV 80

UV 80



UV 80

UV 80



UV 80

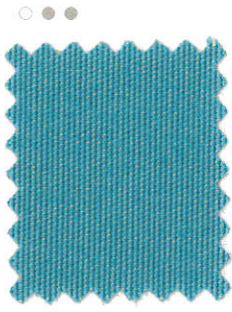
UV 80



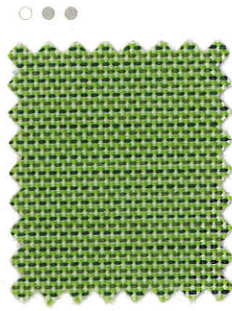
UV 80

UV 80

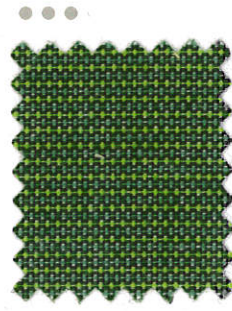
& CRISP



314 153 UV 80



314 396 UV 80



314 043 UV 80



314 E52 UV 80



314 011 UV 80



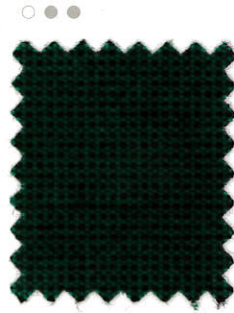
314 006 UV 80



314 004 UV 80



314 271 UV 80



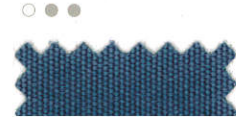
314 257 UV 80



314 624 UV 80







314 362 UV 80



UV 80



UV 80

 = Auch als Art. 308 erhältlich | also available as art. 308 | disponible également dans la qualité 308 | disponible también en la calidad 308 | disponibile anche nell'articolo 308
 = Auch als Art. 321 erhältlich | also available as art. 321 | disponible également dans la qualité 321 | disponible también en la calidad 321 | disponibile anche nell'articolo 321
 = Preiskategorie | price category | catégorie de prix
 = categoria de precios | categoria prezzi

Technische Daten

Technical data | Données Techniques | Specifiche Tecniche | Datos Técnicos

Die angegebenen technischen Daten sind Durchschnittswerte der laufenden Produktion	Technical data shown below are average values of the current production	Les données techniques ci-dessous sont des valeurs moyennes de la production courante	Le specifiche tecniche fornite indicano valori medi relativi alla produzione corrente	Los datos mencionados son valores medios de la producción actual					
Grundgewebe	base	support	base	tejido base	DIN 60 001	PAC	PAC	PAC	
Flächengewicht (g/m ²)	total weight (g/m ²)	pois total (g/m ²)	peso totale (g/m ²)	peso total (g/m ²)	DIN EN ISO 12127	290	335	370	
Hochstzugkraft (daN/5 cm)	tensile strength (daN/5 cm)	résistance à la rupture (daN/5 cm)	resistenza allo strappo (daN/5 cm)	resistencia a la tracción (daN/5 cm)	DIN EN ISO 13934-1	145 / 100	150 / 100	170 / 150	
Höchstzugkraftdehnung (%)	max. tensile strength elongation (%)	élongation max. de la force de traction (%)	allungamento massimo della forza di trazione (%)	alargamiento máx. de la fuerza de tracción (%)	DIN EN ISO 13934-1	30 / 22	30 / 24	35 / 30	
Weiterreißkraft (daN)	tear resistance (daN)	résistance à la déchirure armocée (daN)	resistenza alla lacerazione iniziata (daN)	resistencia al desgarre (daN)	DIN EN ISO 13937-2	3.5 / 3.0	3.5 / 2.5	5.0 / 5.0	
Wassersäule	water column	colonne d'eau	colonna d'acqua	columna de agua	EN 20 811	370 mm	800 mm	460 mm	
Wasserabweisung (Sprühverfahren)	water repellency (spray test)	résistance au mouillage superficiel (essai d'arrosage)	idrorepellente (nebulizzazione)	repelencia al agua (spray test)	EN 24 920	Note: 100	Note: 100	Note: 100	
Ölabweisung	oil repellency	oléorésistance	oleorepellente dei colori	repelencia al aceite	AATC 118	Note: 5	Note: 4	Note: 5	
Farbechttheit	colour fastness	solidité des coloris	solidità di tinta	solidez del color	DIN EN ISO 105-B02	min. 7	min. 7	min. 7	
Warenbreite	width	largeur	Altezza	Anchura		120 cm	120 cm	120 cm	

Hinweise: Änderungen die dem technischen Fortschritt dienen, behalten wir uns vor. Werte ohne Toleranzangaben sind Nennwerte mit einer Toleranz von ±5%. Die Angaben entsprechen unserem heutigen Kenntnisstand und sollen ohne Rechtsverbindlichkeit informieren. • Note: Subject to change in view of technical upgrades. Values indicated without tolerance levels are nominal values with a tolerance range of ±5%. All data presented here is given to the best of our current knowledge for guidance purposes and is not legally binding. • Remarque: Sous réserve de toute modification relative aux caractéristiques techniques. Les valeurs mentionnées sans tolérance sont des valeurs nominales avec une tolérance de ±5%. Les indications correspondent à notre savoir actuel et sont données à titre informatif sans obligation juridique. • Avvertenza: Il prodotto si riserva di apportare modifiche per miglioramenti tecnico del prodotto. I valori privi di tolleranza sono da intendersi come valori nominali con una tolleranza di ±5%. Tutti i dati corrispondono allo stato attuale delle nostre conoscenze e le informazioni fornite non sono legamente vincolanti. • Nota: Sujeto a cambios según mejoras técnicas. Los valores mencionados sin tolerancia son valores nominales con un promedio de tolerancia del ±5%. Los datos mencionados son valores medios de la producción actual y corresponden al nivel de conocimiento presente. Son sólo a título informativo y sin efecto legal alguno.

www.sattler-elements.com

SATTLER
III